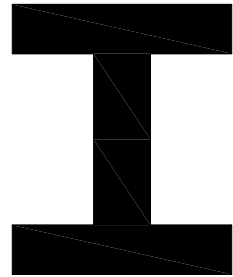
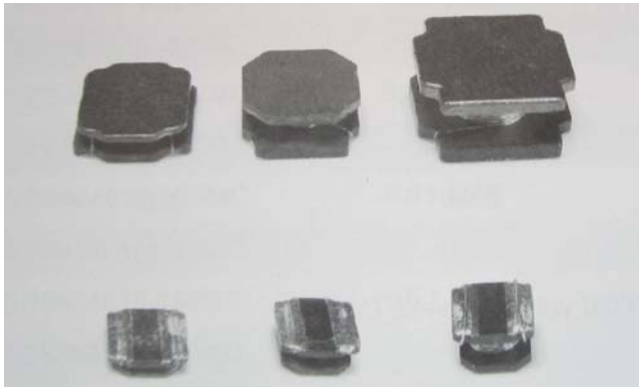




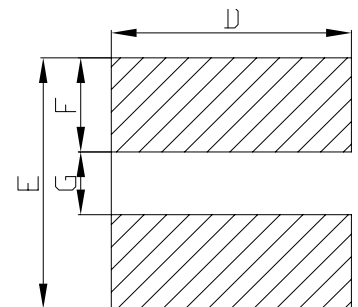
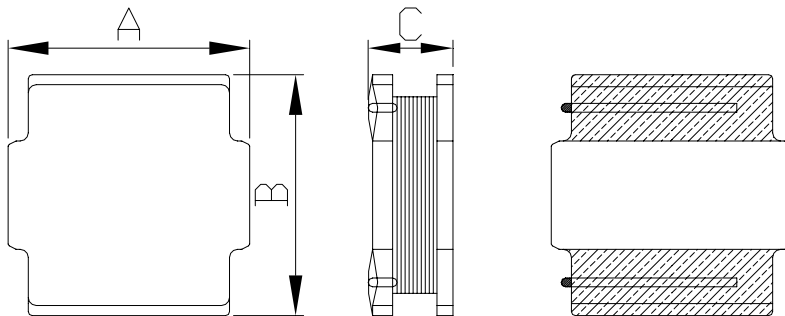
Type Name: SDS Series II

Construction/磁气构造图



Dimensions/外形尺寸图(Unit:mm)

Land patterns/贴装尺寸



SHAPE AND SIZE:(Dimensions are in mm)

Type Name/型名	A	B	C	D	E	F	G	QTY pcs/reel 包装数量
SDS303010	3.0±0.1	3.0±0.1	1.1MAX	2.7REF	3.0REF	0.8REF	1.4REF	1500
SDS303012	3.0±0.1	3.0±0.1	1.3MAX	2.7REF	3.0REF	0.8REF	1.4REF	1000
SDS303015	3.0±0.1	3.0±0.1	1.6MAX	2.7REF	3.0REF	0.8REF	1.4REF	1000
SDS404010	4.0±0.2	4.0±0.2	1.1MAX	3.7REF	4.0REF	1.2REF	1.6REF	3000
SDS404012	4.0±0.2	4.0±0.2	1.3MAX	3.7REF	4.0REF	1.2REF	1.6REF	3000
SDS404018	4.0±0.2	4.0±0.2	2.0MAX	3.7REF	4.0REF	1.2REF	1.6REF	3000
SDS404026	4.0±0.2	4.0±0.2	2.7MAX	3.7REF	4.0REF	1.2REF	1.6REF	2500
SDS606012	6.0±0.2	6.0±0.2	1.3MAX	5.7REF	6.3REF	1.6REF	3.1REF	3500
SDS606020	6.0±0.2	6.0±0.2	2.1MAX	5.7REF	6.3REF	1.6REF	3.1REF	2000
SDS606028	6.0±0.2	6.0±0.2	3.0MAX	5.7REF	6.3REF	1.6REF	3.1REF	1500
SDS606045	6.0±0.2	6.0±0.2	4.5MAX	5.7REF	6.3REF	1.6REF	3.1REF	1000
SDS808040	8.0±0.2	8.0±0.2	4.2MAX	7.5REF	7.4REF	1.8REF	3.8REF	1000


Specifications/规格

TYPE NAME: SDS303010				
Part No./品名	Inductance/ 电感值 (μH)	Test Condition/ 测试条件	D.C.R./ 直流阻抗 (mΩ)MAX.	Saturation Current/ 饱和电流(A)
SDS303010-1R0NC	1.0±30%	100KHz,0.1V	98	1.30
SDS303010-1R5NC	1.5±30%	100KHz,0.1V	116	1.20
SDS303010-2R2MC	2.2±20%	100KHz,0.1V	150	1.10
SDS303010-3R3MC	3.3±20%	100KHz,0.1V	195	0.87
SDS303010-4R7MC	4.7±20%	100KHz,0.1V	285	0.75
SDS303010-6R8MC	6.8±20%	100KHz,0.1V	390	0.61
SDS303010-100MC	10±20%	100KHz,0.1V	637	0.50
SDS303010-150MC	15±20%	100KHz,0.1V	964	0.40
SDS303010-220MC	22±20%	100KHz,0.1V	1248	0.35
SDS303010-330MC	33±20%	100KHz,0.1V	2070	0.26
SDS303010-470MC	47±20%	100KHz,0.1V	2460	0.22

SPECIAL INQUIRIES BESIDE, THE ABOVE COMMON USED TYPES CAN BE MEET ON YOUR REQUIREMENT
◆ Tel: 86-20-34887777 ◆ Fax: 86-20-34887666 ◆ Web: <http://www.utop-china.com>

Specifications/规格

TYPE NAME: SDS303012				
Part No./品名	Inductance/ 电感值 (μ H)	Test Condition/ 测试条件	D.C.R./ 直流阻抗 (m Ω)MAX.	Saturation Current/ 饱和电流(A)
SDS303012-1R0NC	1.0 \pm 30%	100KHz,0.1V	60	1.5
SDS303012-1R5NC	1.5 \pm 30%	100KHz,0.1V	72	1.36
SDS303012-2R2MC	2.2 \pm 20%	100KHz,0.1V	96	1.10
SDS303012-3R3MC	3.3 \pm 20%	100KHz,0.1V	132	0.91
SDS303012-4R7MC	4.7 \pm 20%	100KHz,0.1V	180	0.77
SDS303012-6R8MC	6.8 \pm 20%	100KHz,0.1V	276	0.67
SDS303012-100MC	10 \pm 20%	100KHz,0.1V	420	0.54
SDS303012-150MC	15 \pm 20%	100KHz,0.1V	540	0.44
SDS303012-220MC	22 \pm 20%	100KHz,0.1V	840	0.375
SDS303012-330MC	33 \pm 20%	100KHz,0.1V	1300	0.310
SDS303012-470MC	47 \pm 20%	100KHz,0.1V	2000	0.250

※ The saturation current when the inductance decreases to 70% of initial value. (Ta=25°C)


Specifications/规格

TYPE NAME: SDS303015				
Part No./品名	Inductance/ 电感值 (μ H)	Test Condition/ 测试条件	D.C.R./ 直流阻抗 (m Ω)MAX.	Saturation Current/ 饱和电流(A)
SDS303015-1R0NC	1.0 \pm 30%	100KHz,0.1V	41	2.10
SDS303015-1R5NC	1.5 \pm 30%	100KHz,0.1V	56	1.80
SDS303015-2R2MC	2.2 \pm 20%	100KHz,0.1V	82	1.48
SDS303015-3R3MC	3.3 \pm 20%	100KHz,0.1V	114	1.21
SDS303015-4R7MC	4.7 \pm 20%	100KHz,0.1V	175	1.02
SDS303015-6R8MC	6.8 \pm 20%	100KHz,0.1V	250	0.87
SDS303015-100MC	10 \pm 20%	100KHz,0.1V	375	0.70
SDS303015-150MC	15 \pm 20%	100KHz,0.1V	480	0.56
SDS303015-220MC	22 \pm 20%	100KHz,0.1V	829	0.47
SDS303015-330MC	33 \pm 20%	100KHz,0.1V	1008	0.39
SDS303015-470MC	47 \pm 20%	100KHz,0.1V	1608	0.32

SPECIAL INQUIRIES BESIDE, THE ABOVE COMMON USED TYPES CAN BE MEET ON YOUR REQUIREMENT

◆ Tel: 86-20-34887777 ◆ Fax: 86-20-34887666 ◆ Web: <http://www.utop-china.com>

Specifications/规格

TYPE NAME: SDS404010				
Part No./品名	Inductance/ 电感值 (μ H)	Test Condition/ 测试条件	D.C.R./ 直流阻抗 (m Ω)MAX.	Saturation Current/ 饱和电流(A)
SDS404010-1R2NC	1.2 \pm 30%	100KHz,0.1V	120	1.80
SDS404010-2R2NC	2.2 \pm 30%	100KHz,0.1V	180	1.15
SDS404010-3R3MC	3.3 \pm 20%	100KHz,0.1V	216	1.10
SDS404010-4R7MC	4.7 \pm 20%	100KHz,0.1V	252	0.90
SDS404010-6R8MC	6.8 \pm 20%	100KHz,0.1V	360	0.74
SDS404010-100MC	10 \pm 20%	100KHz,0.1V	456	0.56
SDS404010-150MC	15 \pm 20%	100KHz,0.1V	612	0.47
SDS404010-220MC	22 \pm 20%	100KHz,0.1V	1044	0.36
SDS404010-330MC	33 \pm 20%	100KHz,0.1V	1848	0.28
SDS404010-470MC	47 \pm 20%	100KHz,0.1V	2172	0.24

※ The saturation current when the inductance decreases to 70% of initial value. (Ta=25℃)


Specifications/规格

TYPE NAME: SDS404012				
Part No./品名	Inductance/ 电感值 (μ H)	Test Condition/ 测试条件	D.C.R./ 直流阻 抗 (m Ω)MAX.	Saturation Current/ 饱和电流(A)
SDS404012-1R0NC	1.0 \pm 30%	100KHz,0.1V	84	2.50
SDS404012-2R2MC	2.2 \pm 20%	100KHz,0.1V	126	1.65
SDS404012-3R3MC	3.3 \pm 20%	100KHz,0.1V	182	1.20
SDS404012-4R7MC	4.7 \pm 20%	100KHz,0.1V	196	1.05
SDS404012-6R8MC	6.8 \pm 20%	100KHz,0.1V	252	0.90
SDS404012-100MC	10 \pm 20%	100KHz,0.1V	336	0.74
SDS404012-150MC	15 \pm 20%	100KHz,0.1V	560	0.56
SDS404012-220MC	22 \pm 20%	100KHz,0.1V	672	0.51
SDS404012-330MC	33 \pm 20%	100KHz,0.1V	1134	0.40
SDS404012-470MC	47 \pm 20%	100KHz,0.1V	1400	0.35

SPECIAL INQUIRIES BESIDE, THE ABOVE COMMON USED TYPES CAN BE MEET ON YOUR REQUIREMENT

◆ Tel: 86-20-34887777 ◆ Fax: 86-20-34887666 ◆ Web: <http://www.utop-china.com>

Specifications/规格

TYPE NAME: SDS404018				
Part No./品名	Inductance/ 电感值 (μ H)	Test Condition/ 测试条件	D.C.R./ 直流阻抗 (m Ω)MAX.	Saturation Current/ 饱和电流(A)
SDS404018-1R0NC	1.0 \pm 30%	100KHz,0.1V	42	4.00
SDS404018-2R2MC	2.2 \pm 20%	100KHz,0.1V	84	2.70
SDS404018-3R3MC	3.3 \pm 20%	100KHz,0.1V	98	2.00
SDS404018-4R7MC	4.7 \pm 20%	100KHz,0.1V	126	1.70
SDS404018-6R8MC	6.8 \pm 20%	100KHz,0.1V	154	1.45
SDS404018-100MC	10 \pm 20%	100KHz,0.1V	252	1.20
SDS404018-150MC	15 \pm 20%	100KHz,0.1V	350	0.94
SDS404018-220MC	22 \pm 20%	100KHz,0.1V	504	0.80
SDS404018-330MC	33 \pm 20%	100KHz,0.1V	742	0.65
SDS404018-470MC	47 \pm 20%	100KHz,0.1V	910	0.57
SDS404018-680MC	68 \pm 20%	100KHz,0.1V	1400	0.47
SDS404018-101MC	100 \pm 20%	100KHz,0.1V	2100	0.40
SDS404018-151MC	150 \pm 20%	100KHz,0.1V	3500	0.31
SDS404018-221MC	220 \pm 20%	100KHz,0.1V	5600	0.27

※ The saturation current when the inductance decreases to 70% of initial value. (Ta=25°C)


Specifications/规格

TYPE NAME: SDS404026				
Part No./品名	Inductance/ 电感值 (μ H)	Test Condition/ 测试条件	D.C.R./ 直流阻抗 (m Ω)MAX.	Saturation Current/ 饱和电流(A)
SDS404026-1R2NC	1.2 \pm 30%	100KHz,0.1V	36	3.10
SDS404026-2R3NC	2.3 \pm 30%	100KHz,0.1V	48	2.10
SDS404026-3R5MC	3.5 \pm 20%	100KHz,0.1V	60	1.80
SDS404026-4R7MC	4.7 \pm 20%	100KHz,0.1V	66	1.45
SDS404026-6R6MC	6.6 \pm 20%	100KHz,0.1V	89	1.30
SDS404026-100MC	10 \pm 20%	100KHz,0.1V	117	1.00
SDS404026-150MC	15 \pm 20%	100KHz,0.1V	172	0.90
SDS404026-220MC	22 \pm 20%	100KHz,0.1V	255	0.61
SDS404026-330MC	33 \pm 20%	100KHz,0.1V	377	0.54
SDS404026-470MC	47 \pm 20%	100KHz,0.1V	517	0.41

SPECIAL INQUIRIES BESIDE, THE ABOVE COMMON USED TYPES CAN BE MEET ON YOUR REQUIREMENT

◆ Tel: 86-20-34887777 ◆ Fax: 86-20-34887666 ◆ Web: <http://www.utop-china.com>

Specifications/规格

TYPE NAME: SDS606012				
Part No./品名	Inductance/ 电感值 (μ H)	Test Condition/ 测试条件	D.C.R./ 直流阻抗 (m Ω)MAX.	Saturation Current/ 饱和电流(A)
SDS606012-2R5NC	2.5 \pm 30%	100KHz,0.1V	130	2.10
SDS606012-4R0NC	4.0 \pm 30%	100KHz,0.1V	155	1.80
SDS606012-5R3MC	5.3 \pm 20%	100KHz,0.1V	197	1.50
SDS606012-6R8MC	6.8 \pm 20%	100KHz,0.1V	238	1.30
SDS606012-100MC	10 \pm 20%	100KHz,0.1V	396	1.10
SDS606012-150MC	15 \pm 20%	100KHz,0.1V	528	0.80
SDS606012-220MC	22 \pm 20%	100KHz,0.1V	713	0.76
SDS606012-330MC	33 \pm 20%	100KHz,0.1V	1030	0.59
SDS606012-470MC	47 \pm 20%	100KHz,0.1V	1570	0.52
SDS606012-680MC	68 \pm 20%	100KHz,0.1V	2400	0.44
SDS606012-101MC	100 \pm 20%	100KHz,0.1V	3750	0.35

※ The saturation current when the inductance decreases to 70% of initial value. (Ta=25°C)


Specifications/规格

TYPE NAME: SDS606020				
Part No./品名	Inductance/ 电感值 (μ H)	Test Condition/ 测试条件	D.C.R./ 直流阻抗 (m Ω)MAX.	Saturation Current/ 饱和电流(A)
SDS606020-0R8NC	0.8 \pm 30%	100KHz,0.1V	26.0	5.5
SDS606020-1R5NC	1.5 \pm 30%	100KHz,0.1V	33.8	4.0
SDS606020-2R2NC	2.2 \pm 30%	100KHz,0.1V	44.2	3.2
SDS606020-3R3NC	3.3 \pm 30%	100KHz,0.1V	52.0	2.8
SDS606020-4R7NC	4.7 \pm 30%	100KHz,0.1V	75.4	2.4
SDS606020-6R8NC	6.8 \pm 30%	100KHz,0.1V	110.5	2.0
SDS606020-100MC	10 \pm 20%	100KHz,0.1V	162.5	1.7
SDS606020-220MC	22 \pm 20%	100KHz,0.1V	377	1.05

SPECIAL INQUIRIES BESIDE, THE ABOVE COMMON USED TYPES CAN BE MEET ON YOUR REQUIREMENT

◆ Tel: 86-20-34887777 ◆ Fax: 86-20-34887666 ◆ Web: <http://www.utop-china.com>

Specifications/规格

TYPE NAME: SDS606028				
Part No./品名	Inductance/ 电感值 (μH)	Test Condition/ 测试条件	D.C.R./ 直流阻抗 ($m\Omega$)MAX.	Saturation Current/ 饱和电流(A)
SDS606028-0R9NC	0.9 \pm 30%	100KHz,0.1V	20.8	6.60
SDS606028-1R5NC	1.5 \pm 30%	100KHz,0.1V	25.7	5.00
SDS606028-2R2NC	2.2 \pm 30%	100KHz,0.1V	26.0	4.20
SDS606028-3R0NC	3.0 \pm 30%	100KHz,0.1V	39.0	3.60
SDS606028-4R7MC	4.7 \pm 20%	100KHz,0.1V	50.0	2.70
SDS606028-6R0MC	6.0 \pm 20%	100KHz,0.1V	52.0	2.50
SDS606028-100MC	10 \pm 20%	100KHz,0.1V	84.5	1.90
SDS606028-150MC	15 \pm 20%	100KHz,0.1V	123.5	1.60
SDS606028-220MC	22 \pm 20%	100KHz,0.1V	175.5	1.30
SDS606028-330MC	33 \pm 20%	100KHz,0.1V	286	1.10
SDS606028-470MC	47 \pm 20%	100KHz,0.1V	390	0.95
SDS606028-680MC	68 \pm 20%	100KHz,0.1V	546	0.76
SDS606028-101MC	100 \pm 20%	100KHz,0.1V	780	0.62

※ The saturation current when the inductance decreases to 70% of initial value. (Ta=25°C)



Specifications/规格

TYPE NAME: SDS606045				
Part No./品名	Inductance/ 电感值 (μ H)	Test Condition/ 测试条件	D.C.R./ 直流阻抗 ($m\Omega$)MAX.	Saturation Current/ 饱和电流(A)
SDS606045-1R0NC	1.0 \pm 30%	100KHz,0.1V	18.2	8.5
SDS606045-1R3NC	1.3 \pm 30%	100KHz,0.1V	20.8	8.0
SDS606045-1R8NC	1.8 \pm 30%	100KHz,0.1V	23.4	7.0
SDS606045-2R3NC	2.3 \pm 30%	100KHz,0.1V	27.3	6.0
SDS606045-3R0NC	3.0 \pm 30%	100KHz,0.1V	31.2	5.0
SDS606045-4R5MC	4.5 \pm 20%	100KHz,0.1V	40.3	4.0
SDS606045-6R3MC	6.3 \pm 20%	100KHz,0.1V	49.4	3.8
SDS606045-100MC	10 \pm 20%	100KHz,0.1V	61.1	3.0
SDS606045-150MC	15 \pm 20%	100KHz,0.1V	100.1	2.3
SDS606045-220MC	22 \pm 20%	100KHz,0.1V	149.5	1.9
SDS606045-330MC	33 \pm 20%	100KHz,0.1V	188.5	1.5
SDS606045-470MC	47 \pm 20%	100KHz,0.1V	286	1.3
SDS606045-680MC	68 \pm 20%	100KHz,0.1V	429	1.0
SDS606045-101MC	100 \pm 20%	100KHz,0.1V	650	0.8

SPECIAL INQUIRIES BESIDE, THE ABOVE COMMON USED TYPES CAN BE MEET ON YOUR REQUIREMENT

◆ Tel: 86-20-34887777 ◆ Fax: 86-20-34887666 ◆ Web: <http://www.utop-china.com>

Specifications/规格
TYPE NAME: SDS808040

Part No./品名	Inductance/ 电感值 (μ H)	Test Condition/ 测试条件	D.C.R./ 直流阻抗 (m Ω)MAX.	Saturation Current/ 饱和电流(A)
SDS808040-1R1NC	1.1 \pm 30%	100KHz,0.1V	7.8	11
SDS808040-1R5NC	1.5 \pm 30%	100KHz,0.1V	9.1	9
SDS808040-2R0NC	2.0 \pm 30%	100KHz,0.1V	11.7	7.4
SDS808040-3R6NC	3.6 \pm 30%	100KHz,0.1V	19.5	5.3
SDS808040-4R7NC	4.7 \pm 30%	100KHz,0.1V	26.5	4.7
SDS808040-6R8NC	6.8 \pm 30%	100KHz,0.1V	32.5	4.0
SDS808040-100MC	10 \pm 20%	100KHz,0.1V	44.2	3.4
SDS808040-150MC	15 \pm 20%	100KHz,0.1V	65.0	2.7
SDS808040-220MC	22 \pm 20%	100KHz,0.1V	85.8	2.2
SDS808040-330MC	33 \pm 20%	100KHz,0.1V	130	1.9
SDS808040-470MC	47 \pm 20%	100KHz,0.1V	195	1.5
SDS808040-680MC	68 \pm 20%	100KHz,0.1V	299	1.2
SDS808040-101MC	100 \pm 20%	100KHz,0.1V	377	1.0

※ The saturation current when the inductance decreases to 70% of initial value. (Ta=25 $^{\circ}$ C)